

Portable Emergency Recompression Chamber

Specifications:

7' x 2.5'

Flexible laminated scrim-reinforced plastic

Hinged double ^{metal} ring for clamping halves together

Gas outlets - inlet at head end outlet @ foot end

Connectors for instrumentation - H.R., RR.

Instrument panel - indicators for Total P in PSI & mm Hg & Atmospheres

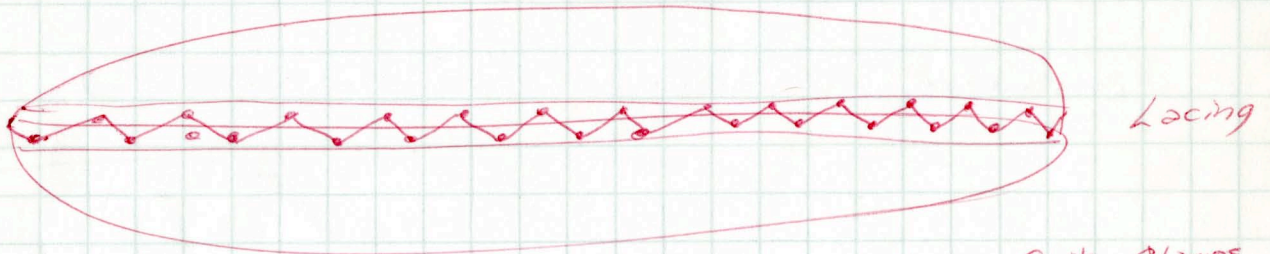
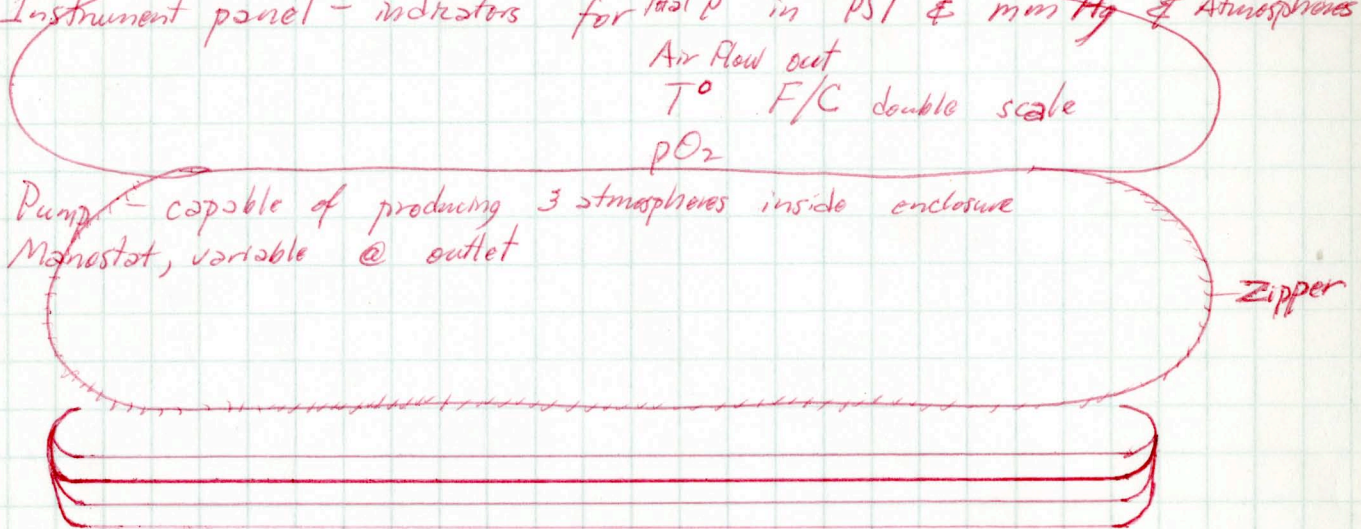
Air Flow out

T° F/C double scale

pO₂

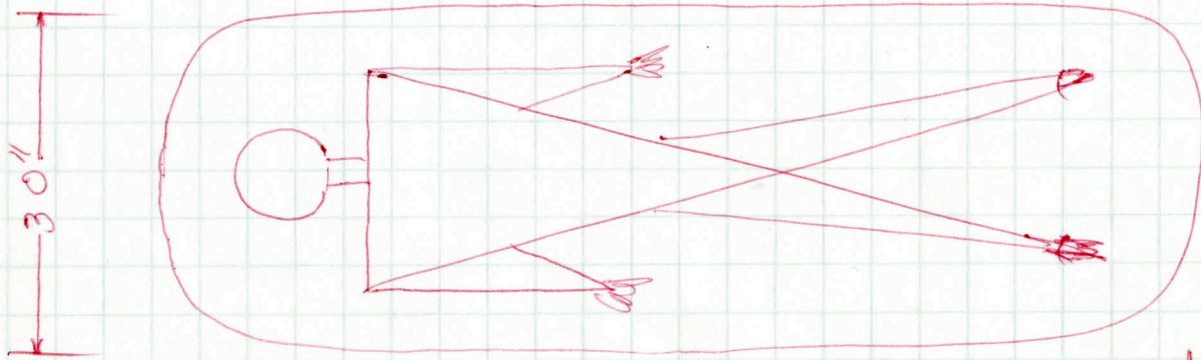
Pump - capable of producing 3 atmospheres inside enclosure

Manostat, variable @ outlet



Lacing

Quik Clamps



30"

7'



JGGAUME April 1968